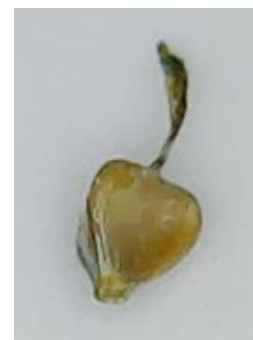


Cyperaceae
Cyperus gracilis
Whisker Grass



Ann Moran
Field Botanist



Transverse Ladybird Beetle *Coccinella transversalis*

ETYMOLOGY

(sy-per-us) Greek kyperiros = name of some kind of sedge; The latin species gracilis (GRES-see-lis) thin, slender delicate;

LIFEFORM

Sedge 10-30cm

STATUS

Widespread common per site (population size); NE Qld throughout SE Qld to Gippsland Vic)

OCCURS

Kenilworth Showgrounds, Bundaberg Q, Lightning Ridge, NSW (PI, Norfolk Is. New Caledonia

HABITAT

Wet, Damp grassland, open woodland

LEAVES

Basal, thin, narrow hair-like dark green with brown sheaths at the base 10-15 cm long;

FLOWERS

Spikelets 3 cm, digitate cluster terminal, chaffy torpedo-shaped, 2-7 spikelets per heads;

Flowering times Nov, Dec, Jan

FRUIT

Nuts, 5-10 mm, torpedo-shaped 2-6 heads, obovoid, trigonous, about 1 mm diam. Dark brown to blackish, distinctly truncate at the apex with style remnants persistent, hardly shorter than the glume; **Fruiting times:** Nov, Dec, Jan

ROOTS

Short rhizome

STEM

Tufted perennial sedge, Stems, tufted 10-40 cm x 0.5 mm diam. triangular, smooth;

ETHNOBOTANY

Used in gardens and indoor plant (cascading feature);

TOLERANCE:

Full sun

INDIGENOUS USES

Underground tubers eaten after roasted in the fire; Seeds were ground into flour;

ID FEATURE

Leaves 1 mm wide; Spikelet stalkless; Stalk cylindrical, Head 3 subtending bracts on each side; apex excurved in side view; Nuts obovoid, distinctly truncate at apex, smooth or punctulate, external cells minute;