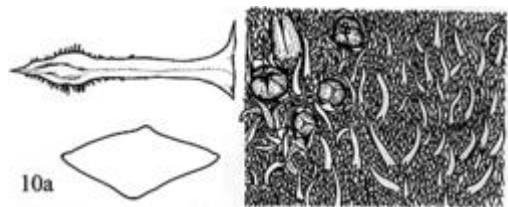


Xanthorrhoeaceae

Xanthorrhoea glauca ssp *glauca*

blue grasstree



Darren Fielder



Ann Moran
Field Botanist

ETYMOLOGY

(zanth-o-REE-a) Greek xanthos = yellow + rheo = flow, referring to yellow resin in type species; The species glauca (GLAW-cah) bluish lustre; glaucous.

LIFEFORM

Shrub 1-5m

OCCURS

Bunya Mountains, Mt Wheeler Qld, Newcastle Byron Bay, Ashford NSW

QLD DISTRICTS

Burnett, Darling Downs, Moreton, Port Curtis, Wide Bay

HABITAT

Steep slopes, Ridges on basalt

LEAVES

Basal, 3-4 x 1-2.6 mm, thick, blue-green, transverse-rhombic to narrowly transverse, apically transverse-linear, diamond-shaped in cross section.

FLOWERS

Spike, 1-2 m on stout long thick stalk; **Flowering times** June, July, Aug, Sept, Oct, Nov

FRUIT

Capsules, 3-lobed embedded in woody spike with tiny black flattened 3 seeds.

Fruiting times Sept, Oct, Nov

TRUNK or STEM

Can be multi-trunked; branched or single; crowns 1-many, spherical.

ETHNOBOTANY

Leaves used as floral decoration; Phenolic component in young flower spikes; Flower spike soaked in water makes a sweet drink. The growing part of the leaf stem and the white leaf bases can be eaten.

TOLERANCE

Full sun

WILDLIFE

Blossoms eaten by flying-fox, possums and sugar gliders, Blossom bat. Flowers provide nectar for adult butterflies; *Tirumala hamata* Blue Tiger, *Delias argenthona* Northern Jezabel *Amegilla pulchra* blue-banded bee *Tetragonula carbonaria*

NATIVE BEES

INSECTS

Erechthias acontistes, *Meyriccia latro*, *Ptilomacra senex*. *Moerarchis australasiella*, *Moerarchis clathrella* Common (1993)

BIRD

Flowers visited by Blue-faced Honeyeater, Brown Honeyeater, Scarlet Honeyeater, Lewin's Honeyeater, Eastern Spinebill, Little Wattlebird, Little Friar-bird, Noisy Friar-bird, Noisy Miner Flower lick for sweet nectar the stalk used as spear shaft, Dried flower stems from a base for fire drills when making a fire; The resin from base of leaves used as a glue used when making weapons and axes.

ID FEATURE

Trunk branched or unbranched + Leaves <5 mm wide bluish green, leaf section 4-sided + Flowers spikes <2m on <1m stalks; Cluster-bracts prominent for most or all mature spike length; packing-bracts dark brown.